

PART OF THE N.W. 1/4, SEC. 34, T.6N., R.1W., S.L.B. & M.

HIGHLAND ADDITION  
AMENDED

BLOCKS 3 & 4

IN OGDEN CITY

FOR COMPLETE ENG DATA SEE  
ORIGINAL DEDICATION PLAT IN  
BOOK 5, PAGE 1 OF RECORDS.

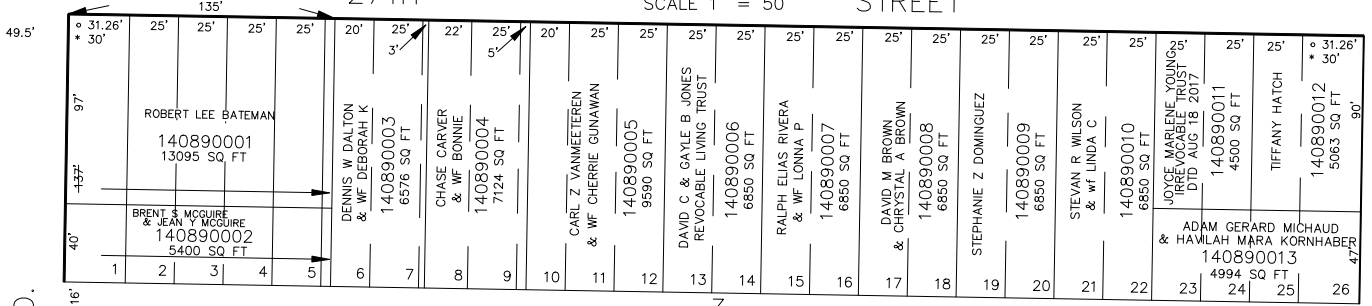
TAXING UNIT: 25

SEE BK. 2, PAGE 18

SCALE 1" = 50'

27TH

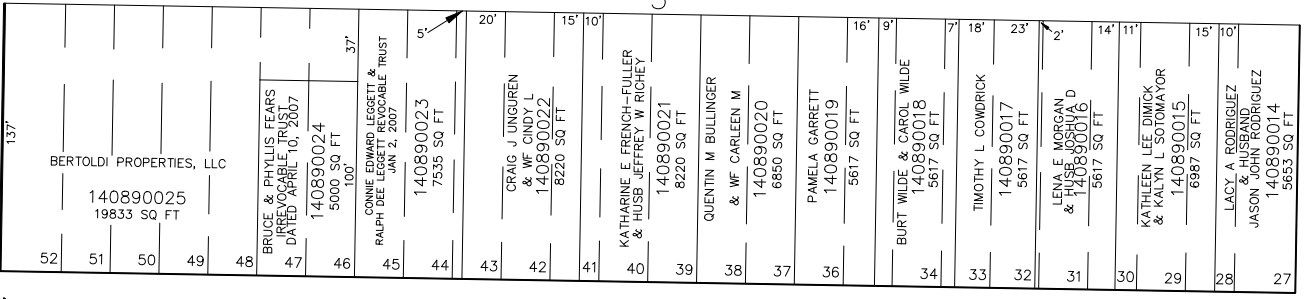
STREET



BLVD.

AVENUE

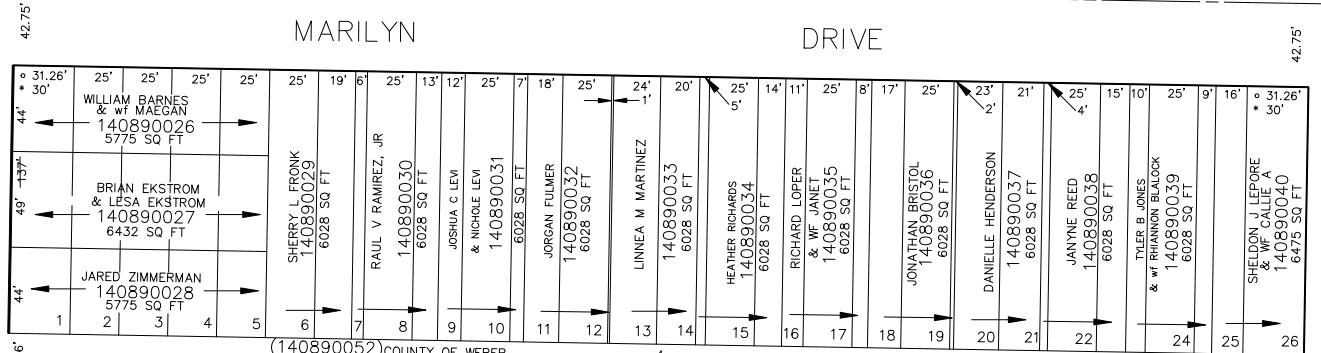
SEE BK. 2, PAGE 15



S 89'02" E

MARILYN

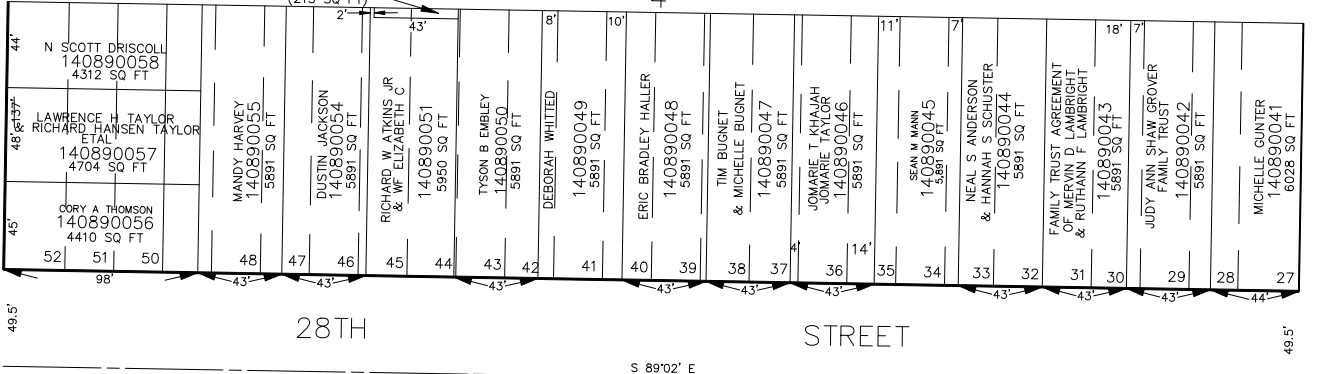
DRIVE



(140890052) COUNTY OF WEBER  
(215 SQ FT)

28TH

STREET



S 89'02" E